

April 1995

8A, 400V - 600V Hyperfast Dual Diodes

Features

- Hyperfast with Soft Recovery <30ns
- Operating Temperature +175°C
- Reverse Voltage Up To 600V
- Avalanche Energy Rated
- Planar Construction

Applications

- Switching Power Supplies
- Power Switching Circuits
- General Purpose

Description

RHRP840CC, RHRP850CC and RHRP860CC (TA49059) are hyperfast dual diodes with soft recovery characteristics ($t_{RR} < 30\text{ns}$). They have half the recovery time of ultrafast diodes and are silicon nitride passivated ion-implanted epitaxial planar construction.

These devices are intended for use as freewheeling/clamping diodes and rectifiers in a variety of switching power supplies and other power switching applications. Their low stored charge and hyperfast soft recovery minimize ringing and electrical noise in many power switching circuits reducing power loss in the switching transistors.

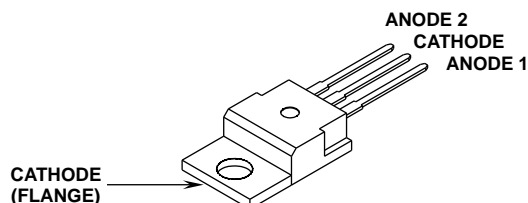
PACKAGING AVAILABILITY

PART NUMBER	PACKAGE	BRAND
RHRP840CC	TO-220AB	RHRP840C
RHRP850CC	TO-220AB	RHRP850C
RHRP860CC	TO-220AB	RHRP860C

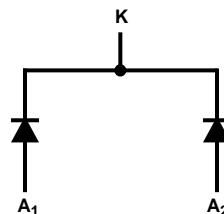
NOTE: When ordering, use the entire part number.

Package

JEDEC TO-220AB



Symbol



Absolute Maximum Ratings (per leg) $T_C = +25^\circ\text{C}$, Unless Otherwise Specified

	RHRP840CC	RHRP850CC	RHRP860CC	UNITS
Peak Repetitive Reverse Voltage..... V_{RRM}	400	500	600	V
Working Peak Reverse Voltage..... V_{RWM}	400	500	600	V
DC Blocking Voltage..... V_R	400	500	600	V
Average Rectified Forward Current..... $I_{F(AV)}$ ($T_C = 150^\circ\text{C}$)	8	8	8	A
Repetitive Peak Surge Current..... I_{FSM} (Square Wave, 20kHz)	16	16	16	A
Nonrepetitive Peak Surge Current..... I_{FSM} (Halfwave, 1 Phase, 60Hz)	100	100	100	A
Maximum Power Dissipation..... P_D	75	75	75	W
Avalanche Energy (See Figures 10 and 11)..... E_{AVL}	20	20	20	mJ
Operating and Storage Temperature..... T_{STG}, T_J	-65 to +175	-65 to +175	-65 to +175	°C

Specifications RHRP840CC, RHRP850CC, RHRP860CC

Electrical Specifications (per leg) $T_C = +25^\circ\text{C}$, Unless Otherwise Specified

SYMBOL	TEST CONDITION	LIMITS									UNITS
		RHRP840CC			RHRP850CC			RHRP860CC			
		MIN	TYP	MAX	MIN	TYP	MAX	MIN	TYP	MAX	
V _F	I _F = 8A, T _C = +25°C	-	-	2.1	-	-	2.1	-	-	2.1	V
	I _F = 8A, T _C = +150°C	-	-	1.7	-	-	1.7	-	-	1.7	V
I _R	V _R = 400V, T _C = +25°C	-	-	100	-	-	-	-	-	-	μA
	V _R = 500V, T _C = +25°C	-	-	-	-	-	100	-	-	-	μA
	V _R = 600V, T _C = +25°C	-	-	-	-	-	-	-	-	100	μA
I _R	V _R = 400V, T _C = +150°C	-	-	500	-	-	-	-	-	-	μA
	V _R = 500V, T _C = +150°C	-	-	-	-	-	500	-	-	-	μA
	V _R = 600V, T _C = +150°C	-	-	-	-	-	-	-	-	500	μA
t _{RR}	I _F = 1A, dI _F /dt = 200A/μs	-	-	30	-	-	30	-	-	30	ns
	I _F = 8A, dI _F /dt = 200A/μs	-	-	35	-	-	35	-	-	35	ns
t _A	I _F = 8A, dI _F /dt = 200A/μs	-	18	-	-	18	-	-	18	-	ns
t _B	I _F = 8A, dI _F /dt = 200A/μs	-	10	-	-	10	-	-	10	-	ns
Q _{RR}	I _F = 8A, dI _F /dt = 200A/μs	-	56	-	-	56	-	-	56	-	nC
C _J	V _R = 10V, I _F = 0A	-	25	-	-	25	-	-	25	-	pF
R _{θJC}		-	-	2	-	-	2	-	-	2	°C/W

DEFINITIONS

V_F = Instantaneous forward voltage (pw = 300 μs , D = 2%).

I_R = Instantaneous reverse current.

t_{RR} = Reverse recovery time (See Figure 2), summation of $t_A + t_B$.

t_A = Time to reach peak reverse current (See Figure 2).

t_B = Time from peak I_{RM} to projected zero crossing of I_{RM} based on a straight line from peak I_{RM} through 25% of I_{RM} (See Figure 2).

Q_{RR} = Reverse recovery charge.

C_J = Junction Capacitance.

$R_{\theta JC}$ = Thermal resistance junction to case.

E_{AVL} = Controlled avalanche energy. (See Figures 10 and 11).

pw = pulse width.

D = duty cycle.

V_1 AMPLITUDE CONTROLS I_F
 V_2 AMPLITUDE CONTROLS dI_F/dt
 L_1 = SELF INDUCTANCE OF
 $R_4 + L_{\text{LOOP}}$

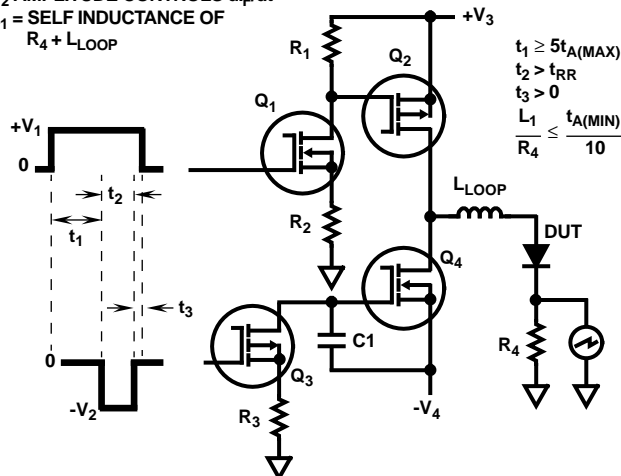


FIGURE 1. t_{RR} TEST CIRCUIT

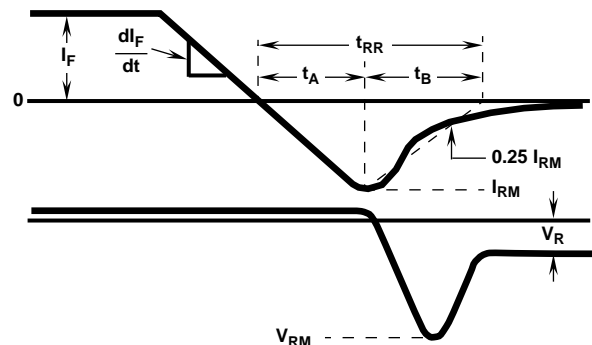


FIGURE 2. t_{RR} WAVEFORMS AND DEFINITIONS

Typical Performance Curves

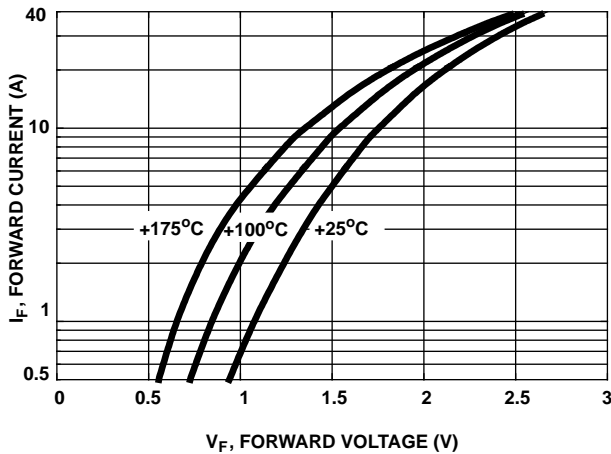


FIGURE 3. TYPICAL FORWARD CURRENT vs FORWARD VOLTAGE DROP

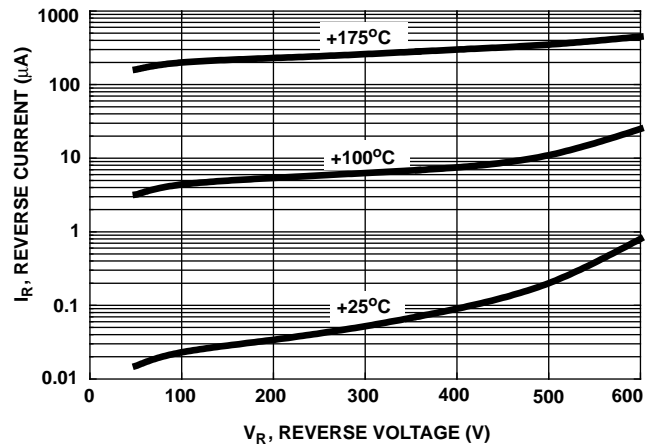


FIGURE 4. TYPICAL REVERSE CURRENT vs REVERSE VOLTAGE

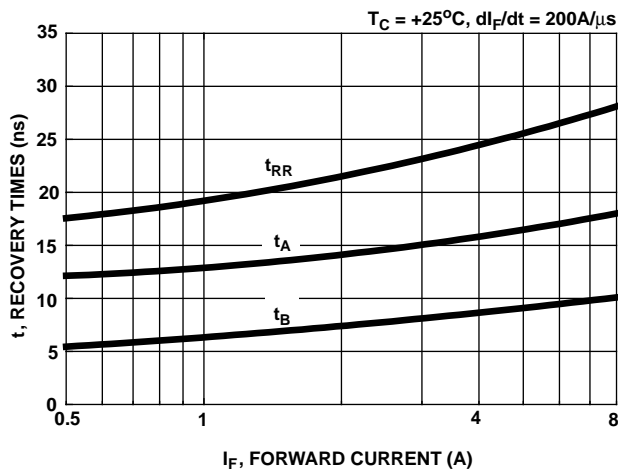


FIGURE 5. TYPICAL t_{RR} , t_A AND t_B CURVES vs FORWARD CURRENT AT +25°C

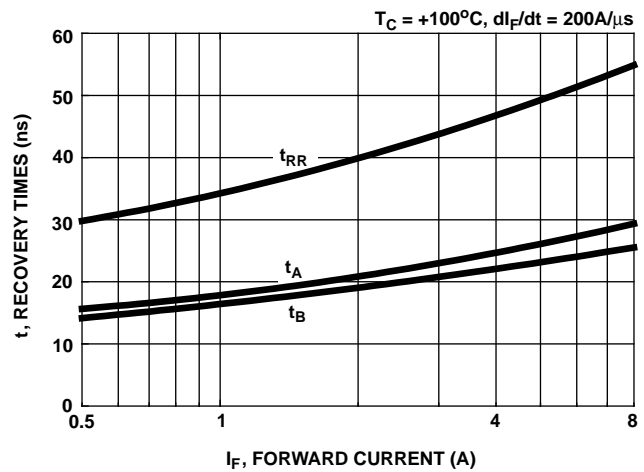


FIGURE 6. TYPICAL t_{RR} , t_A AND t_B CURVES vs FORWARD CURRENT AT +100°C

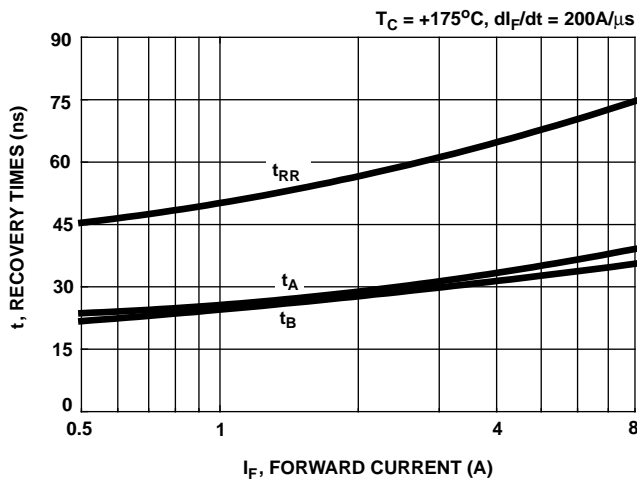


FIGURE 7. TYPICAL t_{RR} , t_A AND t_B CURVES vs FORWARD CURRENT AT +175°C

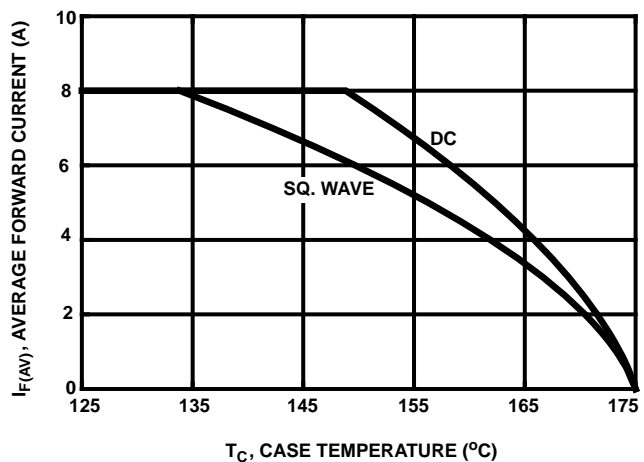


FIGURE 8. CURRENT DERATING CURVE FOR ALL TYPES

Typical Performance Curves (Continued)

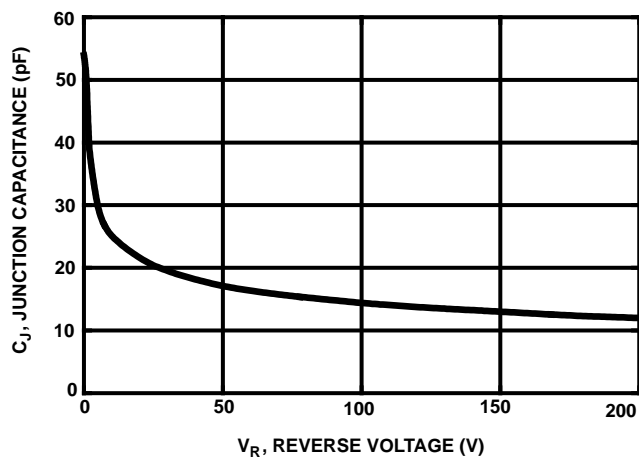


FIGURE 9. TYPICAL JUNCTION CAPACITANCE vs REVERSE VOLTAGE

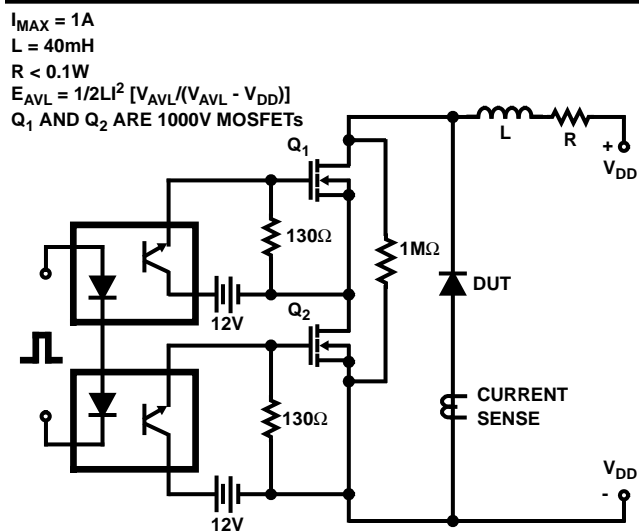


FIGURE 10. AVALANCHE ENERGY TEST CIRCUIT

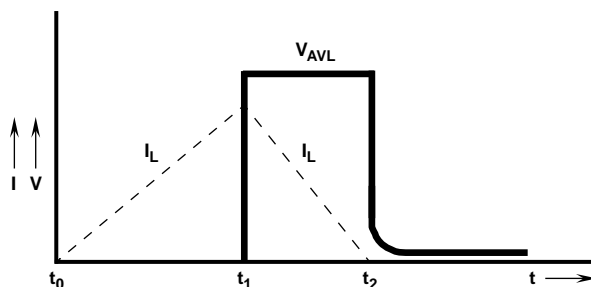


FIGURE 11. AVALANCHE CURRENT AND VOLTAGE WAVEFORMS